

CS Series – Heavy Duty Cam Switches

Key features:

- Wide variety of heavy-duty oiltight cam switches
- Operators available up to 12 positions
- Switches made with a double circuit contact block
- Contact blocks rated 600V, 10A
- Ideal for ammeter/voltmeter applications
- Built to order — not available in subcomponents
- UL listed and CSA certified
- Type 4, 13



UL Listed
File No. E68961



CSA Certified
File No. LR48366

Contact Ratings

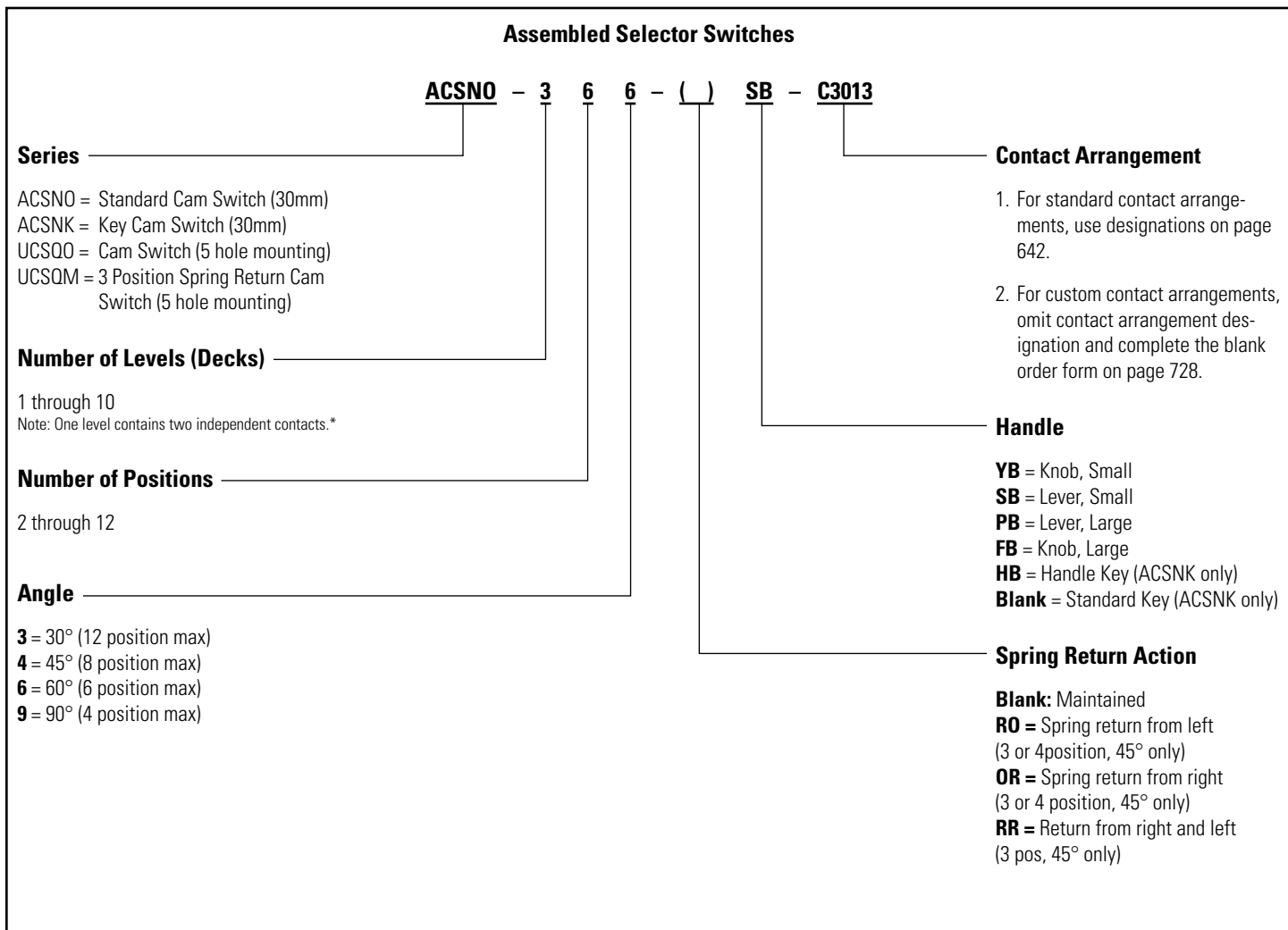
Rated Thermal Current		10A			
AC	Break Current	120V/5A	240V/3A	480V/2A	600V/1A
	Resistive Break Current	24V/8A	110V/8A	220V/1A	440V/0.45A
DC	Inductive Break Current	24V/5A	110V/1.2A	220V/0.45A	440V/0.20A
	Make Current (A)	Rated amperage x 1.1			
Electrical Life		500,000 operations minimum (at full rated load)			
Mechanical Life		5,000,000 (at no load)			

CS Series

Series	Style	Operator		Maximum Contacts To Be Mounted	Handle Styles
		Cam Angle	Position		
ACSNO		30°	Up to 12	1 to 10 decks; Up to 20 contacts	YB, SB, PB, FB
		45°	Up to 8		
		60°	Up to 6		
		90°	Up to 4		
ACSNK		30°	Up to 12	1 to 10 decks; Up to 20 contacts	HB or standard key
		45°	Up to 8		
		60°	Up to 6		
		90°	Up to 4		
UCSQO		30°	Up to 12	1 to 10 decks; Up to 20 contacts	YB, SB, PB, FB
		45°	Up to 8		
		60°	Up to 6		
		90°	Up to 4		
UCSQM		45° Spring return	Only 3	1 to 3 decks; Up to 6 contacts	YB, SB, PB, FB

1. Do not use spring return (SR) for more than six contacts.
2. Two identical keys come with ACSNK unit. Specify "H" for handle key option.
3. For handle styles, see page 729.

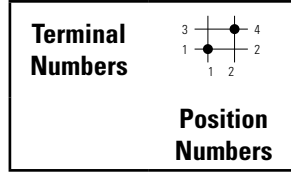
Selector Switches (Assembled)



1. *Contact blocks may contain two independent contacts, (a four position switch with four independent contacts only requires two contact blocks).
 2. *Caution: switches with 180° or more of rotation may require separate blocks for each contact due to cam overlapping.
 3. Key retainable in every 45° position (45, 90, 180, 225, 270, 315, 360).

Contact Arrangements

Standard Arrangements



C-1001



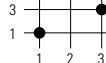
C-1002



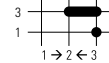
C-1014



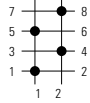
C-1005



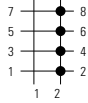
C-1008



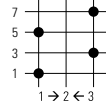
C-2001



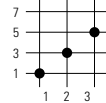
C-2002



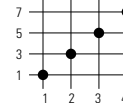
C-2006



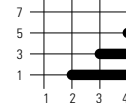
C-2004



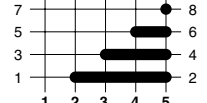
C-2008



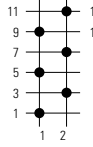
C-2009



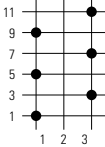
C-2027



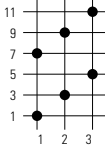
C-3001



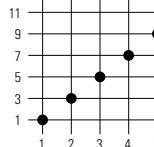
C-3002



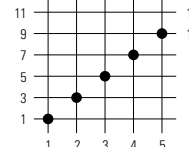
C-3005



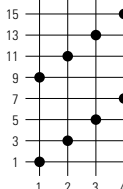
C-3013



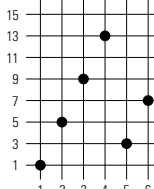
C-3016



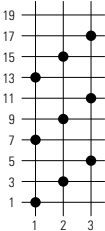
C-4001



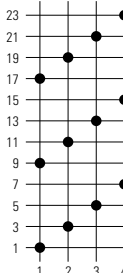
C-4002



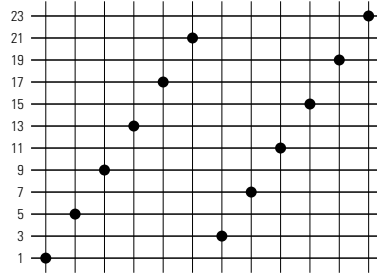
C-5001



C-6001



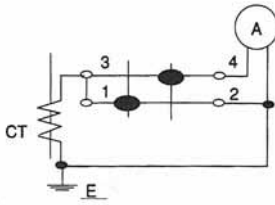
C-6002



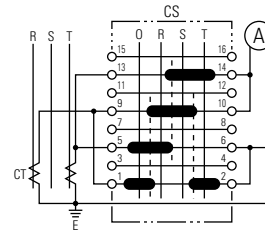
Contact Arrangements continued

Ammeter Switching

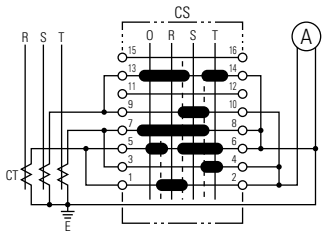
C-1012



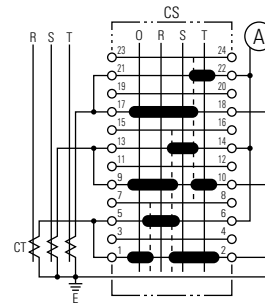
C-4007



C-4003

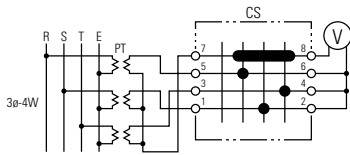


C-6003

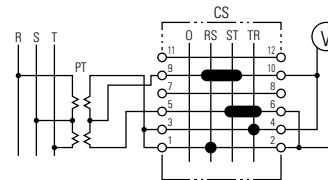


Voltmeter Switching

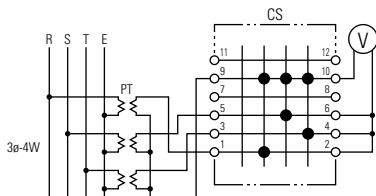
C-2022



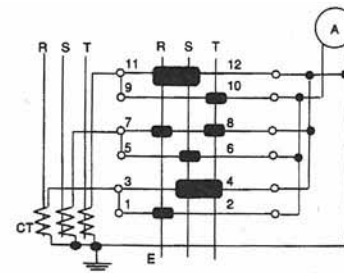
C-3008



C-3009



C-3007



Switches & Pilot Devices

Signaling Lights

Relays & Sockets

Timers

Contactors

Terminal Blocks

Circuit Breakers

Accessories — CS Series

Replacement Handles



					
Part Number	CSH-YB	CSH-SB	CSH-PB	CSH-FB	CSH-H2B
Dimensions	0.79"D x 1.61"H	0.79"D x 1.97"H	1.58"D x 1.97"H	1.58"D x Ø 1.97"	0.95"D x 2.28"H
Applicable Models	ACSNO, UCSQO, UCSQM				ACSNK

Replacement Nameplates


Size & Shape □ 2.52" (64mm) Black Aluminum			
Part Number	CQ	CQM	CQN
Applicable Models	UCSQO	UCSQM	ACSNO, ACSNK

- 1. Extra cost for engraving, 3/16" min. letter height, Legends maximum ten characters.
- 2. Blank nameplates are supplied with all cam switches (they need not be ordered separately).

Wiring Clips

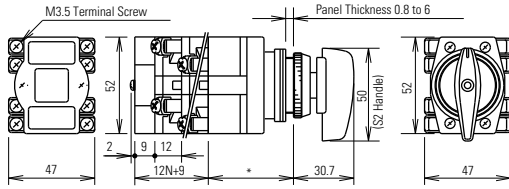
Part Number	Contact Block Jumpers
CJ-1 	Between decks
CJ-2 	Same deck

Replacement Keys

Part Number	Description
K301 	Pair of keys (#301)

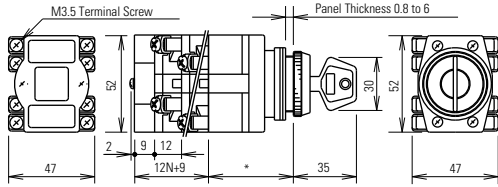
Dimensions/Terminal Arrangements/Mounting Holes

ACSNO



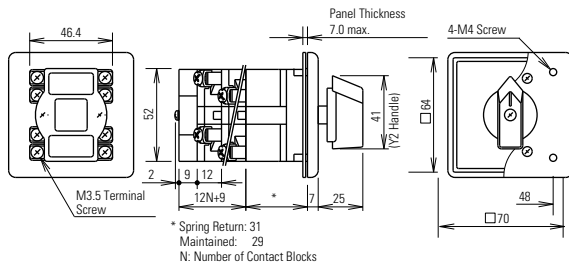
* Spring Return: 44
 Maintained: 42
 N: Number of Contact Blocks

ACS NK



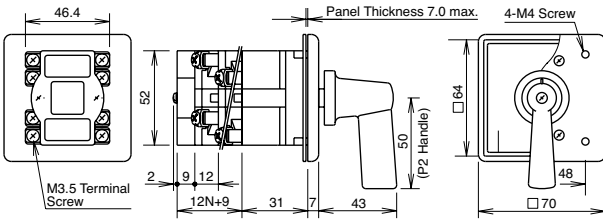
* Spring Return: 44
 Maintained: 42
 N: Number of Contact Blocks

UCSQO



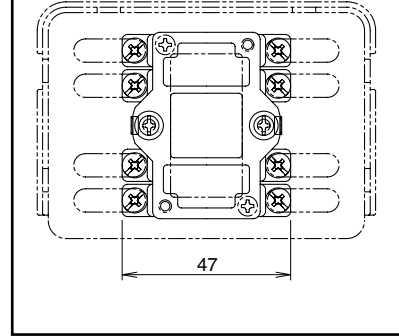
* Spring Return: 31
 Maintained: 29
 N: Number of Contact Blocks

UCSQM

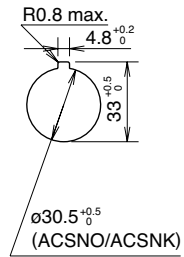


N: Number of Contact Blocks

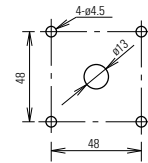
Terminal Arrangement



Mounting Holes



UCSQO
 UCSQM



Switches & Pilot Devices

Signaling Lights

Relays & Sockets

Timers

Contactors

Terminal Blocks

Circuit Breakers